
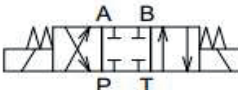
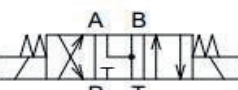

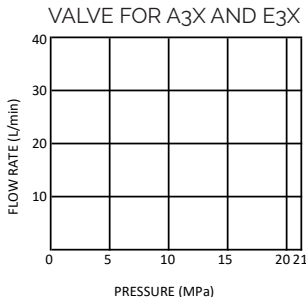
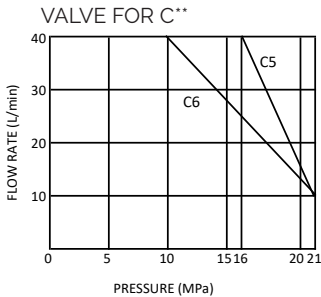


Valve Specifications

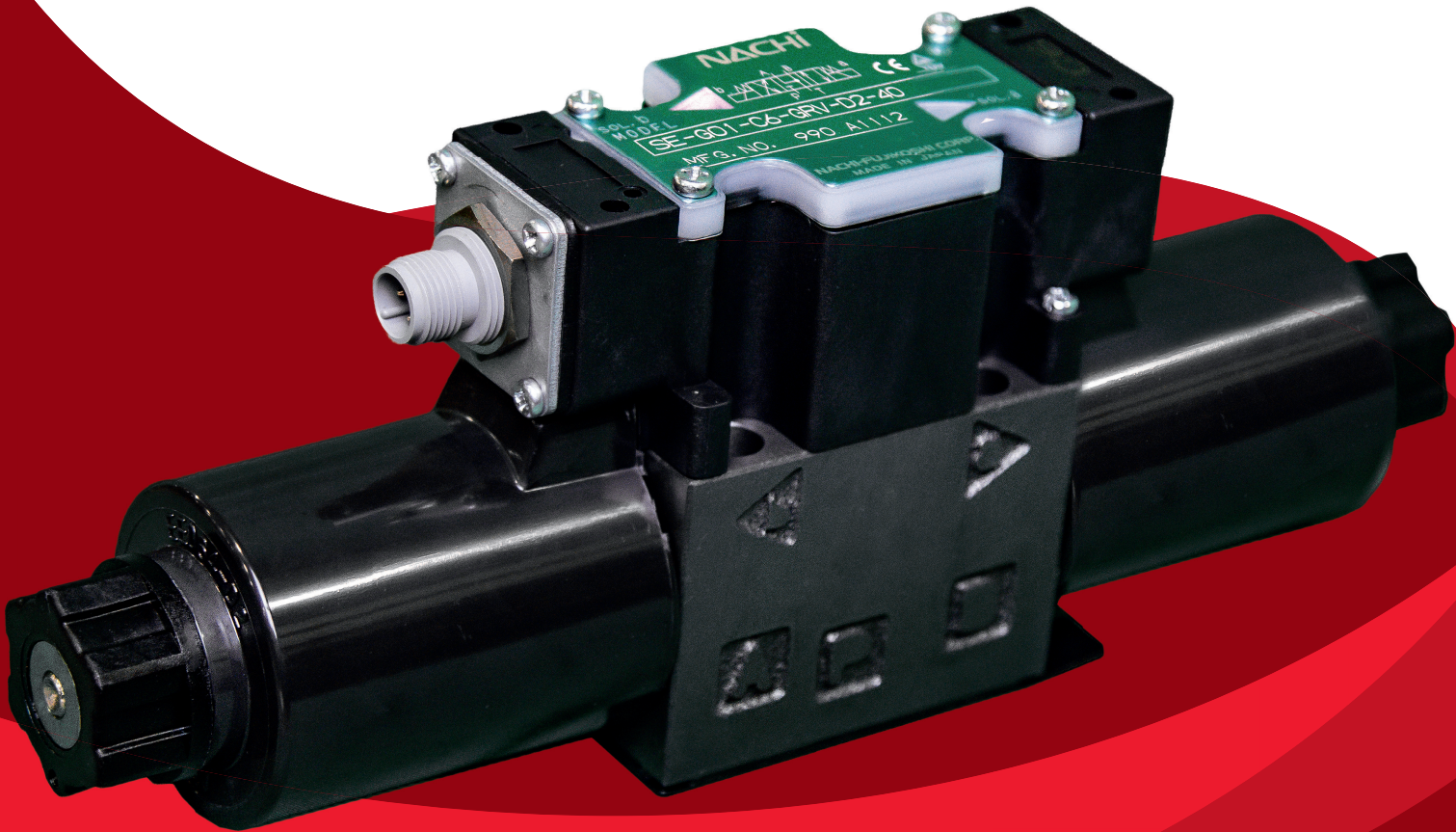
JIS Symbol	VALVE SPOOL TYPE	MAXIMUM OPERATING PRESSURE (MPa)	MAXIMUM FLOW (L/min)	PERMISSABLE BACK PRESSURE (MPa)
	A3X	21	See Figure Below	16
	C5			
	C6			
	E3X			

Pressure - Flow Volume Allowed



NACHI

SE Series Solenoid Valve



Multiple Valves with Minimal Wiring
200mA Holding Current
Allows the Utilization of I/O and Wiring Blocks to Connect
3000 PSI

NACHI
NACHI AMERICA INC.

877.622.4487
ml-nai.Hydraulics@Nachi.com
www.NachiAmerica.com

Nachi America Inc.
715 Pushville Road
Greenwood, IN 46143



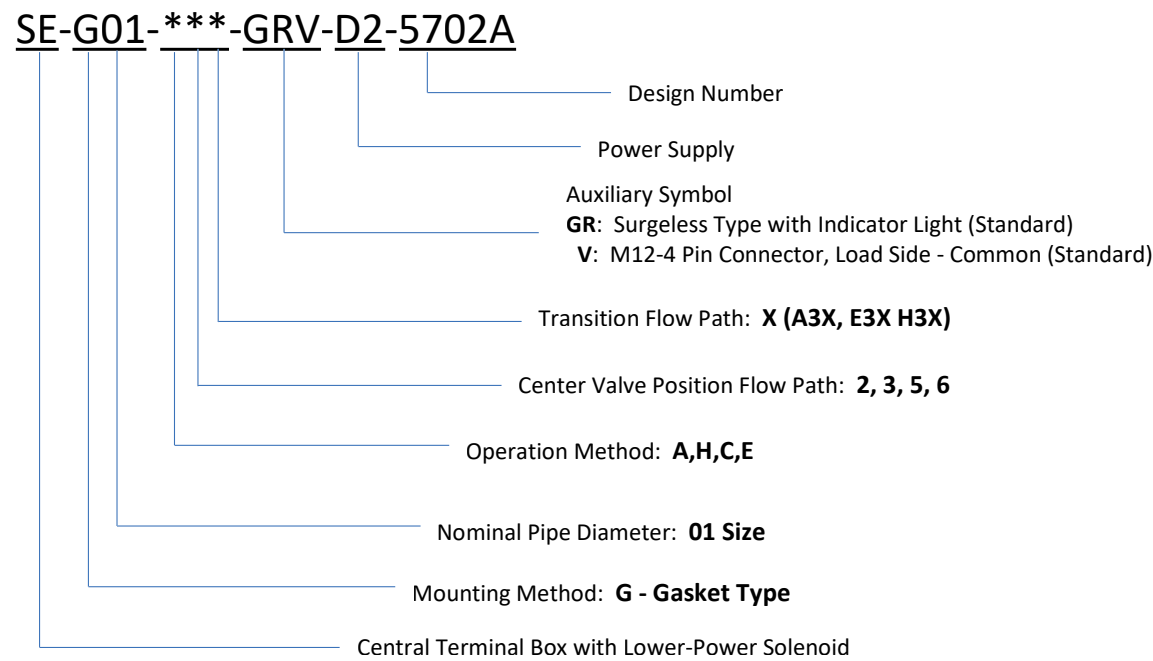
SE Series Solenoid Valve Features

- Allows for 40 LPM at 10MPa
 - Increased flow rate at 10 LPM higher than earlier models
 - Low power consumption
 - Low coil temperature elevation minimizes the effects of heat
 - Small chance of coil burnout even with the AC solenoid
 - M12-4 pin connector option makes it easier to interface with open networks (e.g., DeviceNet)
- Extended durability
 - G01 size is globally compliant and meets TÜV and CE Mark safety standards

Ideal Use:

 - Powering a directional valve entirely off a 24 VDC I/O board
 - Powering idle system circuits for a lifecycle where pressure/flow rate falls within the SE range (e.g., brake circuits, clamps, dye/ injection molders, etc.)

Explanation of Model Number



Note: Available spool types include A3X, H3X, E3X, C5, C6

SE Valve

Solenoid Assembly Specification

Solenoid Type	DC
Power Supply Type	D2
Voltage	DC24V
Holding Current	0. 2A
Holding Power	4. 8W
Allowable Voltage Range	21. 6~26. 4V

Recommended Operating Conditions

Dustproof And Waterproof	:JIS C 0920 IP64
Operating Temperature Range	: -20~50°C
Operating Hydraulic Oil	:Petroleum Based Hydraulic Oil
Operating Hydraulic Oil Temperature Range	: -20~70°C
Operating Viscosity	:15~300 mm²/s
Filtration	:25mm or Less

Solenoid Assembly Specification

Solenoid Type		SE-G01	
		DC Solenoid	
		D2	
Maximum Working Pressure		P,A, B ports	3000 psi
Maximum Allowable Back Pressure		T port	2320 psi
Change Over Frequency (per minute)			120
Standard		Indicator Light Surgeless and M12-4 Pin Connector, Load Side	GRV
Weight (lbs.)		Double Solenoid	4.8
		Single Solenoid	3.7
Operating Environment	Operating Fluid	Dust Resistance/ Water Resistance Rank	IP64 (Dust Tight, Splash Proof)
		Ambient Temperature	-4 to 122° F
		Temperature Range	-4 to 158° F
		Viscosity Range	15 to 30 centistokes
		Filtration	25 microns or less
Bundled Accessories		Mounting Bolt	(4) 10-24 x 1 ¾ LG (not included)
			Use Grade 8 or equivalent
		Tightening Torque	3.5 to 5 ft lbs.