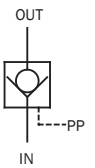
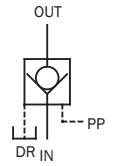




Normal form



External drain type



Pilot Check Valve

84.5 gpm
3045 psi

Features

Normally, fluid is allowed to flow in a single direction, just as with a standard check valve. Reverse flow can be enabled,

however, when the check valve is pushed upwards by external pilot pressure. Very compact configuration.

Specifications

Model No		Nominal Diameter (Size)	Maximum Working Pressure psi	Maximum Flow Rate gpm	Cracking Pressure psi	Weight lbs		Area Ratio		
Screw Mounting	Gasket Mounting					T Type	G Type	Pilot Piston	Valve	Small Valve
CP-T03-1-*-20 2	CP-G03-1-*-20 2	3/8	3045	10.5	29 72.5	8.3 (10.3)	9.4 (11.4)	1	0.35	0.05
CP-T06-1-*-20 2	CP-G06-1-*-20 2	3/4		29.0	29 72.5	15.4 (18)	14.5 (17.1)	1	0.37	0.03
CP-T10-1-*-20 2	CP-G10-1-*-20 2	1¼		84.5	29 72.5	26.4 (31.5)	27.5 (32.6)	1	0.36	0.03

Note: Weight values in parentheses are for the external drain type.

• Handling

1 The following explains how to use the external drain. Be sure to always use the external drain type when back pressure is applied to fluid outlet port side A during reverse flow as in the circuit illustrated below.

2 Minimum pilot pressure is altered by input side B pressure during reverse flow. Because of this, operate the valve so pressure is at least twice as high as the required pilot pressure obtained using the minimum pilot pressure characteristics.

3 Use the following table for specification when a sub plate is required.

Model No.	Pipe Diameter	Recommended Flow Rate gpm	Weight lbs	Applicable Valve Type
MCP-03-20	3/8	10.5	2.4	CP-G03-*-20
MCP-06-20	3/4	29	3.7	CP-G06-*-20
MCP-10-20	1¼	84.5	7.9	CP-G10-*-20

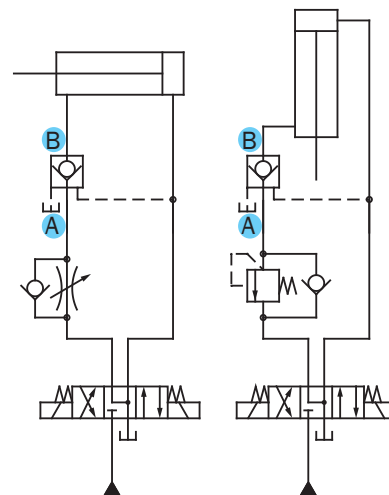
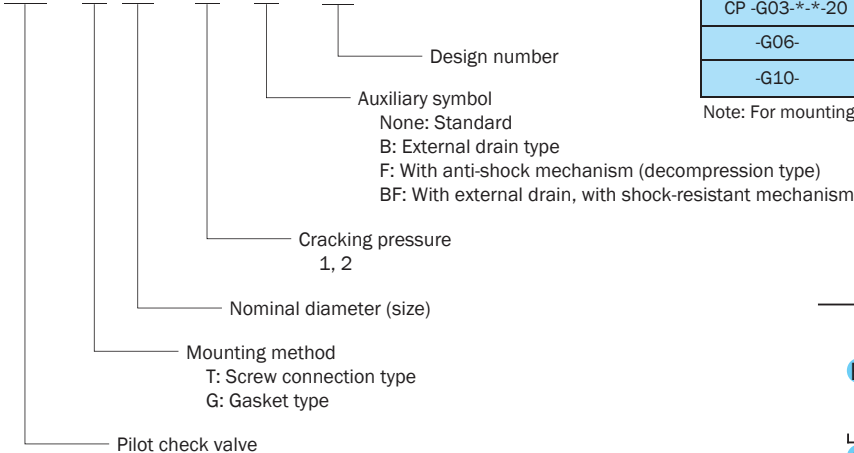
4 The following are the bundled mounting bolts.

Model No.	Bolt Dimensions	Q'ty	Tightening Torque ft lbs
CP-G03-*-20	M8 × 45 ℓ	4	14.7 to 18.4
-G06-	M10 × 55 ℓ	4	33 to 40.5
-G10-	M10 × 65 ℓ	6	33 to 40.5

Note: For mounting bolts, use 12T or equivalent.

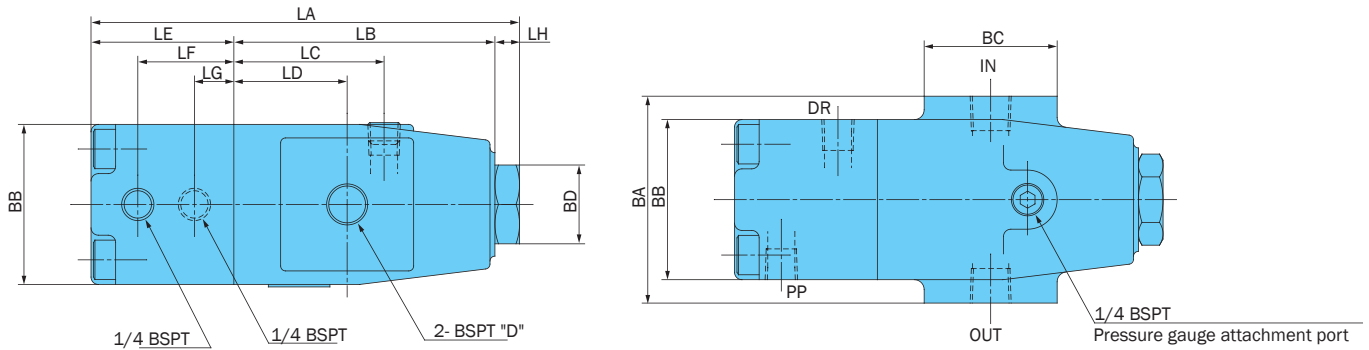
Understanding Model Numbers

CP - G 03 - 1 - B - 20



Installation Dimension Drawings

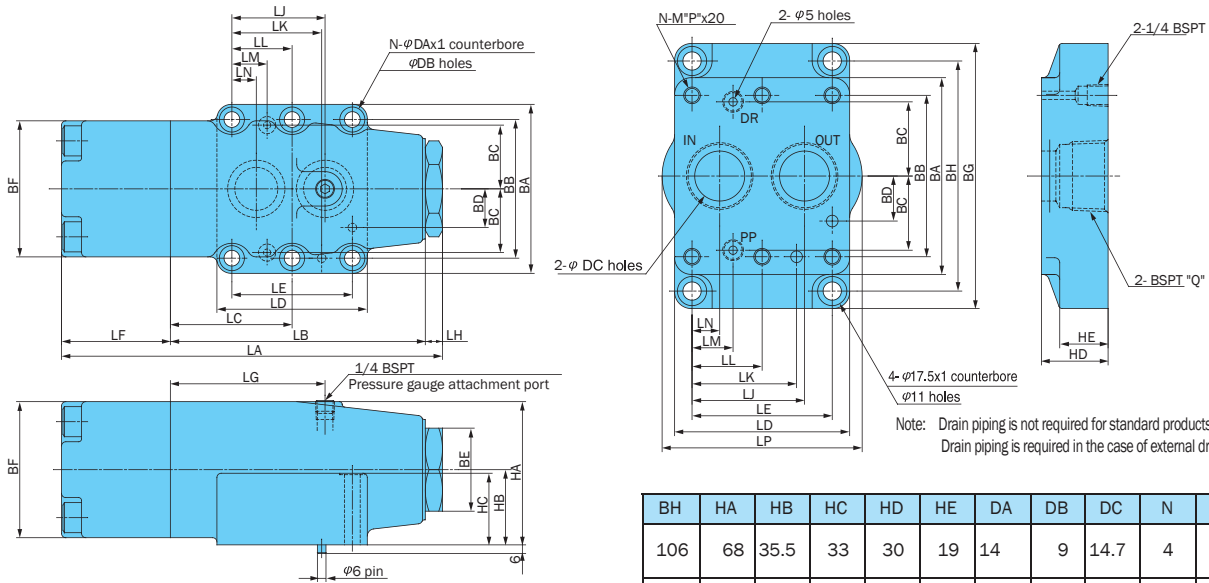
CP-T**-**-20 (Screw Mounting)



Model No.	LA	LB	LC	LD	LE	LF	LG	LH	BA	BB	BC	BD	D
CP-T03-*(F)-20	146	106	61	46	30	15	-	10	84	65	54	32	3/8
CP-T03-*(B)(F)-20	174				58	39	16						
CP-T06-*(F)-20	180	140	85	66	30	15	-	10	122	76	64	41	3/4
CP-T06-*(B)(F)-20	212				62	43	16						
CP-T10-*(F)-20	225	178	108	85	35	15	-	12	150	95	85	58	1 1/4
CP-T10-*(B)(F)-20	266				76	57	16						

CP-G**-**-20 (Gasket Mounting)

Sub Plate MCP**-**-20



Note: Drain piping is not required for standard products.
Drain piping is required in the case of external drain type (B).

BH	HA	HB	HC	HD	HE	DA	DB	DC	N	P	Q
106	68	35.5	33	30	19	14	9	14.7	4	8	3/8
124	79	41	38	30	19	17.5	11	22	4	10	3/4
138	100	52.5	50	40	29	17.5	11	30	6	10	1 1/4

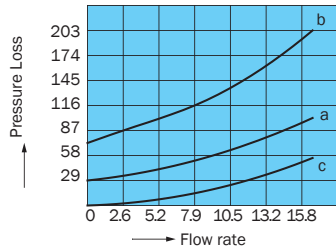
Model No.	LA	LB	LC	LD	LE	LF	LG	LH	LJ	LK	LL	LM	LN	LP	BA	BB	BC	BD	BE	BF	BG
CP-G03-*(F)-20	146	106	51	64	44	30	61	10	37	-	-	16	7	-	82	64	23	18	32	65	126
CP-G03-*(B)(F)-20	174					58															
CP-G06-*(F)-20	180	140	66	83	60.3	30	85	10	49.2	44.5	-	20.6	11.1	-	102	79.4	33.3	-	41	76	146
CP-G06-*(B)(F)-20	212					62															
CP-G10-*(F)-20	225	178	85	105	84.1	35	108	12	67.5	62.7	42.05	24.6	16.6	120	118	96.8	44.5	-	58	95	159
CP-G10-*(B)(F)-20	266					76															

Performance Curves

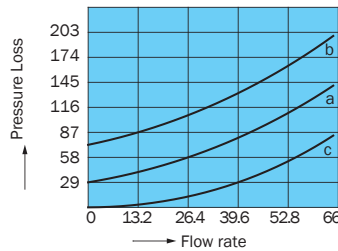
Hydraulic Operating Fluid Viscosity 32 centistokes

Pressure Loss Characteristics

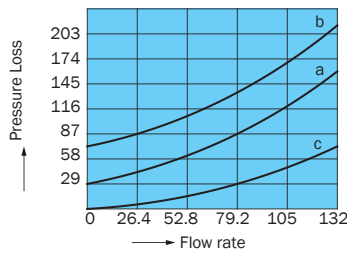
- CP-*03** Applicable Valve Type
 a. CP-*03-1-*20 Free Flow
 b. CP-*03-2-*20 "
 c. CP-*03-*-*20 Reverse Flow



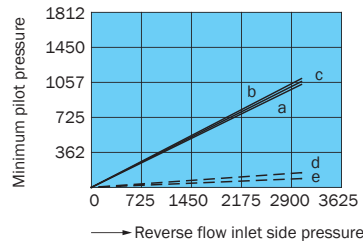
- CP-*06** Applicable Valve Type
 a. CP-*06-1-*20 Free Flow
 b. CP-*06-2-*20 "
 c. CP-*06-*-*20 Reverse Flow



- CP-*10** Applicable Valve Type
 a. CP-*10-1-*20 Free Flow
 b. CP-*10-2-*20 "
 c. CP-*10-*-*20 Reverse Flow



Minimum Pilot Pressure Characteristics



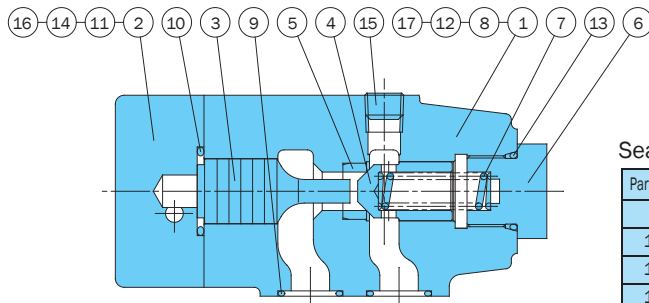
Applicable Valve

Model No.	Valve Open	Small Valve Open
CP-*03	a	d
CP-*06	b	e
CP-*10	c	e

Cross-sectional Drawing

Note: O-ring 1B-** refers to JIS B2401-1B-**.

CP-G**-*-20



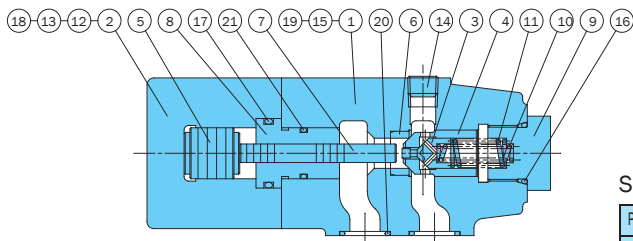
Part No.	Part Name	Part No.	Part Name	Part No.	Part Name
1	Body	7	Spring	13	O-ring
2	Cover	8	Pin	14	Screw
3	Piston	9	O-ring	15	Plug
4	Poppet	10	O-ring	16	Plug
5	Seat	11	O-ring	17	Plate
6	Plug	12	O-ring		

Seal Part List (Kit Model Number DPS-***)

Part No.	Part Name	CP-G03-*-20	CP-G06-*-20	CP-G10-*-20	Q'ty
9	O-ring	1B-P18	1B-G25	1B-G35	2
10	O-ring	1B-G25	1B-G40	1B-G55	1
11	O-ring	1B-P7	1B-P9	1B-P9	2
12	O-ring	1B-P9	1B-P9	1B-P9	2
13	O-ring	1B-P22	1B-P30	1B-P42	1

***in the kit number is used for specification of the valve size.

CP-G**-*-BF-20



Part No.	Part Name	Part No.	Part Name	Part No.	Part Name
1	Body	9	Plug	17	O-ring
2	Cover	10	Spring	18	O-ring
3	Poppet	11	Spring	19	O-ring
4	Poppet	12	Screw	20	O-ring
5	Piston	13	Plug	21	O-ring
6	Seat	14	Plug	22	Plate
7	Rod	15	Pin		
8	Bushing	16	O-ring		

Seal Part List (Kit Model Number DPS-***R)

Part No.	Part Name	CP-G03-*-BF-20	CP-G06-*-BF-20	CP-G10-*-BF-20	Q'ty
16	O-ring	1B-P22	1B-P30	1B-P42	1
17	O-ring	1B-G25	1B-G40	1B-G55	1
18	O-ring	1B-P7	1B-P9	1B-P9	2
19	O-ring	1B-P9	1B-P9	1B-P9	2
20	O-ring	1B-P18	1B-G25	1B-G35	2
21	O-ring	1B-P18	1B-P30	1B-G45	1

***in the kit number is used for specification of the valve size.