

F Type Flow Control (and Check) Valve (with Pressure Compensation)

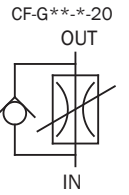
2.3 to 98.5 gpm
3045 psi

Features

Wide control flow rate range.
A pressure compensation mechanism ensures that the control flow rate does not change, even when there is pressure fluctuation.

Specifications

Model No.	Nominal Diameter (Size)	Volume control flow rate gpm	Maximum Working Pressure psi	Cracking pressure psi	Weight lbs	Gasket Surface Dimensions
(C)F-G06-170-20	3/4	2.3 to 44.9	3045	14.5	45.2	ISO 6263-AP-08-2-A
(C)F-G10-373-20	1 ¹ / ₄	5.2 to 98.5			95	-



- Handling
- 1 In the pressure range of 145 to 3045 psi, flow rate fluctuation is within ±5% of the setting flow rate.
 - 2 For flow rate control, make sure that the pressure differential between the input port and output port is at least 145 psi.
 - 3 The control flow rate is increased by clockwise (rightward) rotation of the control handle.

4 See the table below for installation hex socket bolts.

5 Use the following table for specification when a sub plate is required.

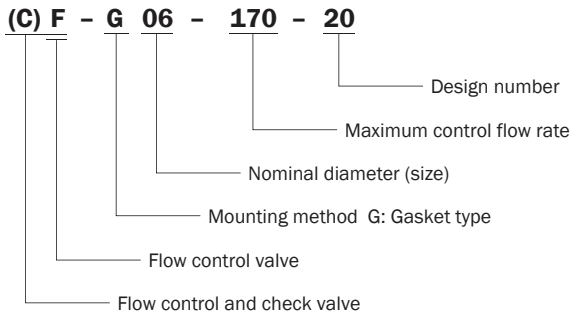
Sub Plate Application Table

Model No.	Pipe Diameter	Recommended Flow Rate gpm	Weight lbs	Applicable Valve Type
MF-06-10	3/4	28	13.8	(C)F-G06-170-20
MF-06X-20	1	44.9	21.3	
MF-10-10	1 ¹ / ₄	64.9	46.5	(C)F-G10-373-20

Applicable Model	Bolt Size	Q'ty	Tightening Torque ft lbs
(C)F-G06	M16 × 100 ℓ	4	140 to 173
(C)F-G10	M20 × 115 ℓ	4	272 to 339

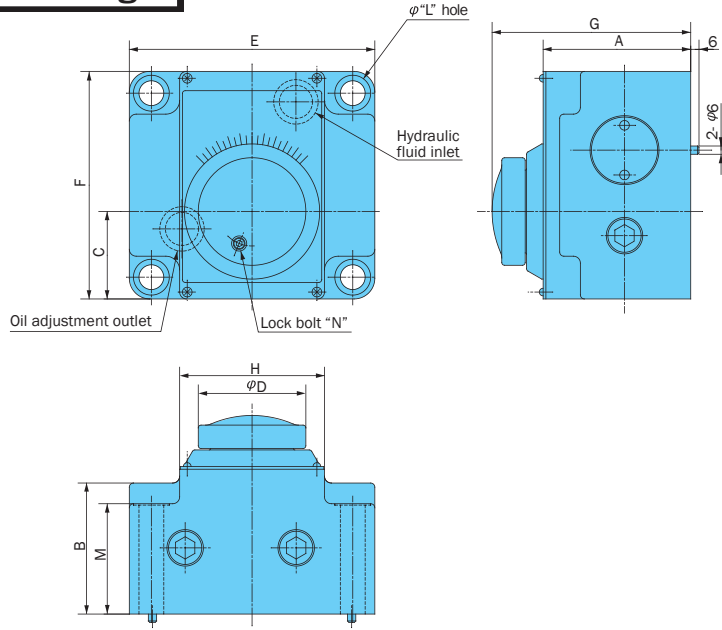
Note: For mounting bolts, use 12T or equivalent.

Understanding Model Numbers



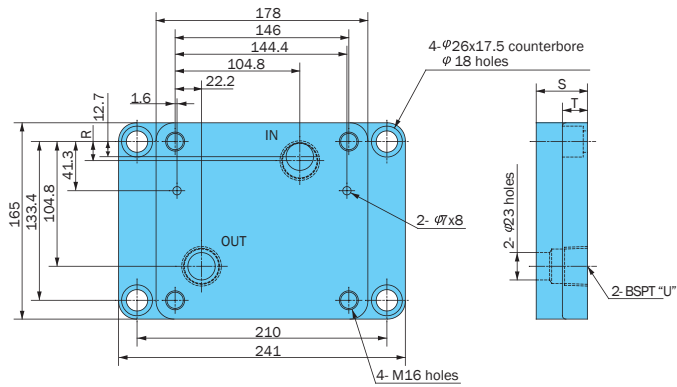
Installation Dimension Drawings

(C)F-G**-*-20



Model No.	Dimensions mm												
	A	B	C	D	E	F	G	H	J	K	L	M	N
(C)F-G06-*-20	107	95	63.4	80	178	165	144.5	105	26	1	18	80	M5
(C)F-G10-*-20	124	108	81.8	90	245	225	169.5	140	32	1	22	89	M6

Sub Plate MF-06*-20

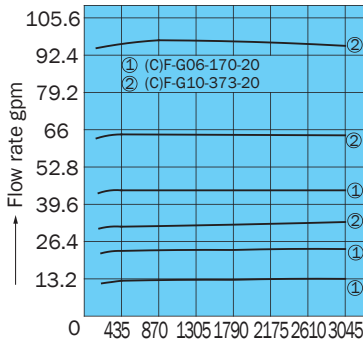


Sub Plate	Dimensions mm			
	R	S	T	U
MF-06-20	12.7	25	22	3/4
MF-06X-20	16	43	21	1

Performance Curves

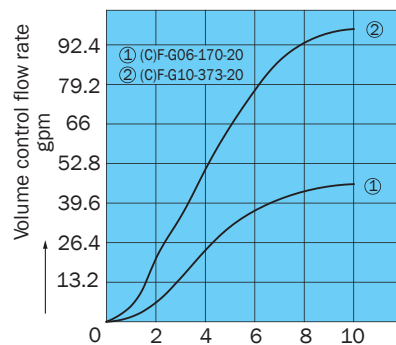
Hydraulic Operating Fluid Viscosity 32 centistokes

Pressure - Control Flow Rate Characteristics



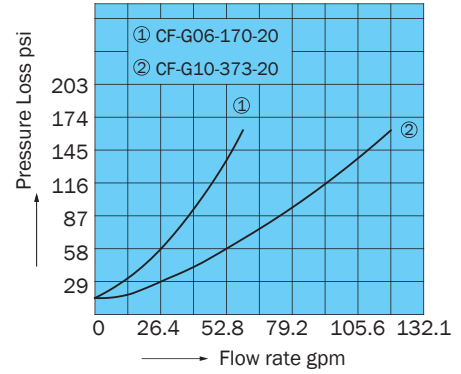
→ Pressure psi

Scale - Control Flow Rate Characteristics



→ Scale

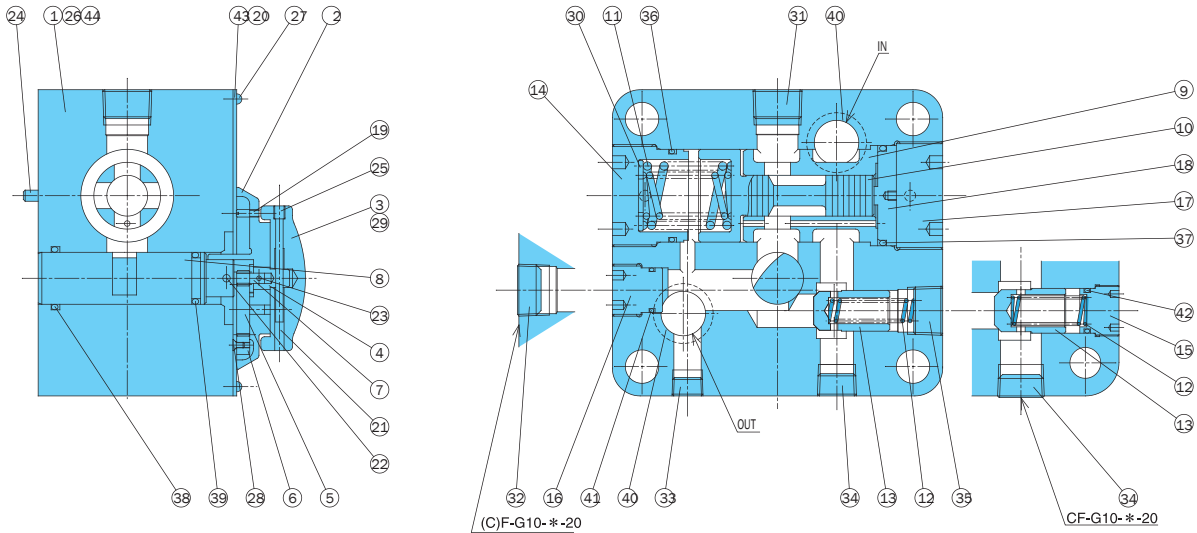
Pressure Loss Characteristics



→ Flow rate gpm

Cross-sectional Drawing

CF-G**-**-20



Part No.	Part Name	Part No.	Part Name	Part No.	Part Name	Part No.	Part Name	Part No.	Part Name
1	Body	9	Sleeve	18	Retainer	27	Screw	36	O-ring
2	Cover	10	Piston	19	Stopper	28	Screw	37	O-ring
3	Knob	11	Spring	20	Pin	29	Screw	38	O-ring
4	Gear	12	Spring	21	Pin	30	Washer	39	O-ring
5	Gea	13	Poppet	22	Pin	31	Plug	40	O-ring
6	Gear	14	Plug	23	Pin	32	Plug	41	O-ring
7	Bushing	15	Plug	24	Pin	33	Plug	42	O-ring
8	Throttle	16	Plug	25	Screw	34	Plug	43	Plate
		17	Plug	26	Screw	35	Plug	44	Screw

Seal Part List (Kit Model Number FBBS-***)

Part No.	Part Name	CF-G06-170-20		CF-G10-373-20	
		Part Number	Q'ty	Part Number	Q'ty
36	O-ring	IB-G45	1	IB-G60	1
37	O-ring	IB-P48	1	IB-G65	1
38	O-ring	IB-P28	1	IB-P45	1
39	O-ring	IB-P22A	1	IB-P39	1
40	O-ring	IB-P29	2	IB-P32	2
41	O-ring	IB-P20	1	-	-
42	O-ring	-	-	IB-P26	1

Note: O-ring 1B-*** refers to JIS B2401-1B-***.
For the *** part of the kit number, specify the valve size (G06, G10).