



### Check Modular Valve

13.2 to 79.2 gpm  
3625, 5075 psi

#### Features

This modular valve is a check valve that prevents reverse-flow.

The 01, 03, 04 sizes include types that can also be used as suction and differential circuits.

Maximum Operating Pressure: 3625, 5075 psi

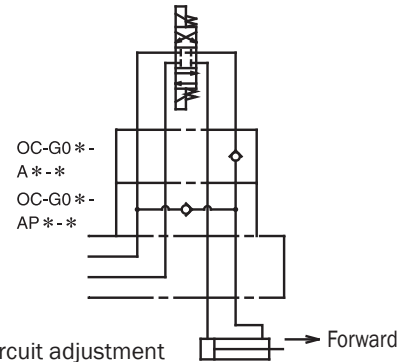
#### Specifications

Model No.	Nominal Diameter (Size)	Maximum Working Pressure psi	Maximum Flow Rate gpm	Cracking pressure psi	Weight lbs	Gasket Surface Dimensions		
OC-G01-P1-20 P2 P3	1/8	3625	13.2	5.8	2.2	ISO 4401-03-02-0-94		
50.7								
72.5								
5.8								
50.7								
72.5								
OC-G01-T1-20 T2 T3	1/8	3625	13.2	5.8	2.2	ISO 4401-03-02-0-94		
50.7								
72.5								
5.8								
50.7								
72.5								
OC-G01-A1-21 A2 A3	1/8	3625	13.2	5.8	2.6	ISO 4401-03-02-0-94		
50.7								
72.5								
5.8								
50.7								
72.5								
OC-G01-AP1-20 AP2 AP3	1/8	3625	13.2	5.8	2.2	ISO 4401-03-02-0-94		
50.7								
72.5								
2.1				2.2			ISO 4401-03-02-0-94	
OCV-G01-W-20								
OC-G03-P1-J50 P2 P3	3/8	3625	26.4		5.8	5.9		ISO 4401-05-04-0-94
50.7								
72.5								
5.8								
50.7								
72.5								
OC-G03-T1-J50 T2 T3	3/8	3625	26.4	5.8	5.9	ISO 4401-05-04-0-94		
50.7								
72.5								
5.8								
50.7								
72.5								
OC-G03-A1-J50 A2 A3	3/8	3625	26.4	5.8	5.9	ISO 4401-05-04-0-94		
50.7								
72.5								
5.8								
50.7								
72.5								
OC-G03-AP1-J50 AP2 AP3	3/8	3625	26.4	5.8	5.9	ISO 4401-05-04-0-94		
50.7								
72.5								
2.1				7.7			ISO 4401-05-04-0-94	
OCV-G03-W-J50								
OCH-G04-P1-10 P2 P3	1/2	5075	79.2		5.8	9.9		ISO 4401-07-06-0-94
50.7								
72.5								
5.8								
50.7								
72.5								
OCH-G04-T1-10 T2 T3	1/2	5075	79.2	5.8	14.3	ISO 4401-07-06-0-94		
50.7								
72.5								
5.8								
50.7								
72.5								
OCH-G04-A1-10 A2 A3	1/2	5075	79.2	5.8	9.9	ISO 4401-07-06-0-94		
50.7								
72.5								
5.8								
50.7								
72.5								
OCH-G04-AP1-10 AP2 AP3	1/2	5075	79.2	5.8	9.9	ISO 4401-07-06-0-94		
50.7								
72.5								
1.4				14.3			ISO 4401-07-06-0-94	
OVH-G04-W-10								

• Handling

- Differential circuit can be easily configured at P → B by attaching OC-G\*\*-A\* above the OC-G\*\*-AP\* on the subplate. (See the figure to the right.)
- Note that a sub plate and installation bolts are not included. See pages H4 and F87-89 if these items are required.

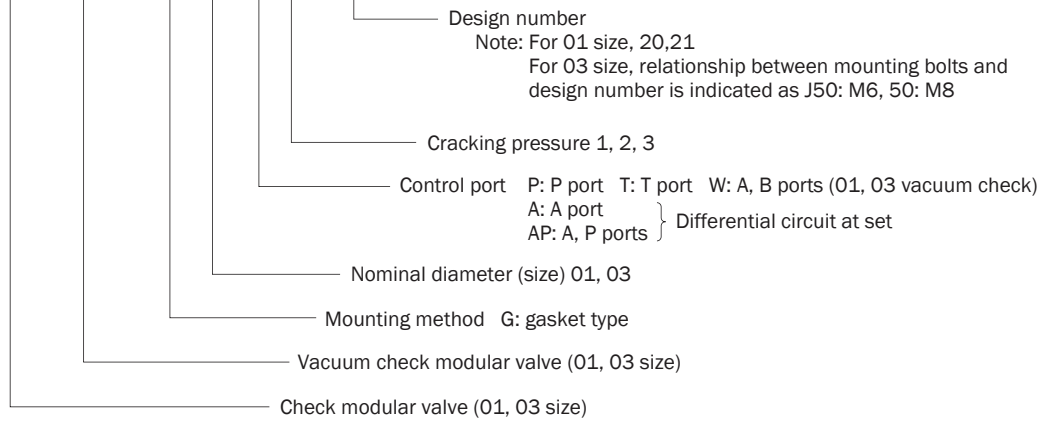
3 04 series modular valves do not have an L (DR2) drain port, so they cannot be used in combination with pressure center type solenoid valves (D).



# Understanding Model Numbers

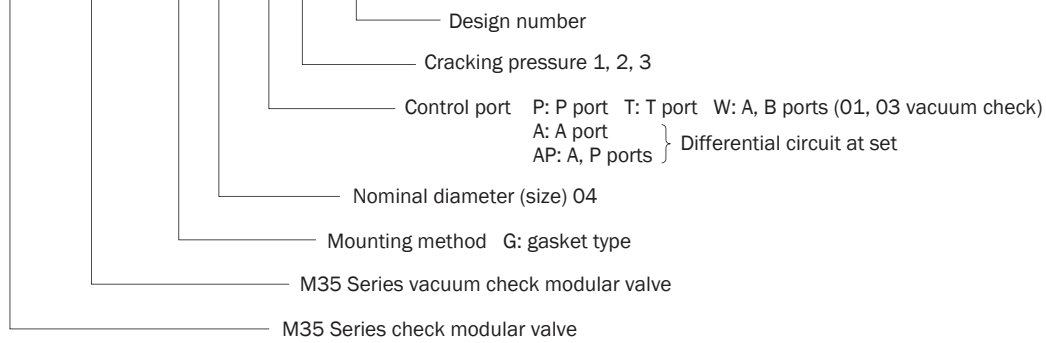
01, 03 size

**OC (OCV) - G 03 - P 1 - J50**

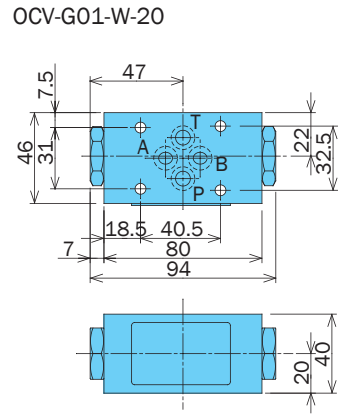
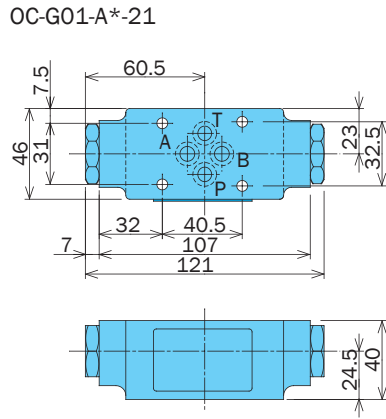
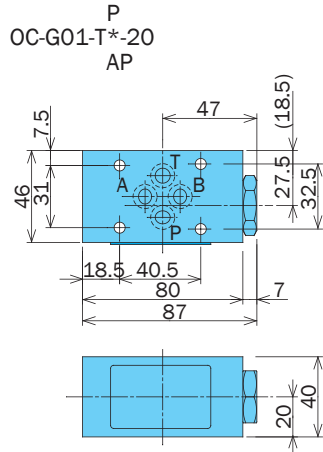


04 size

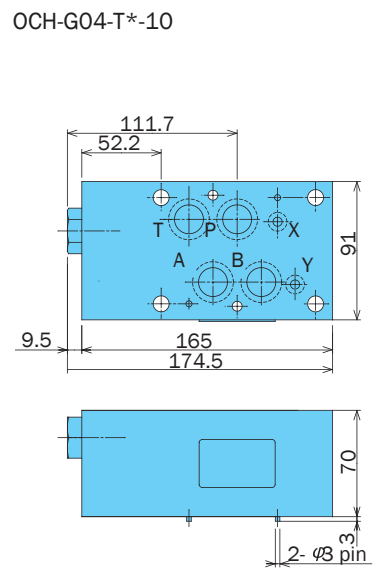
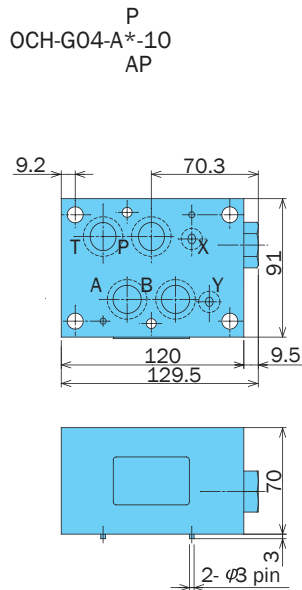
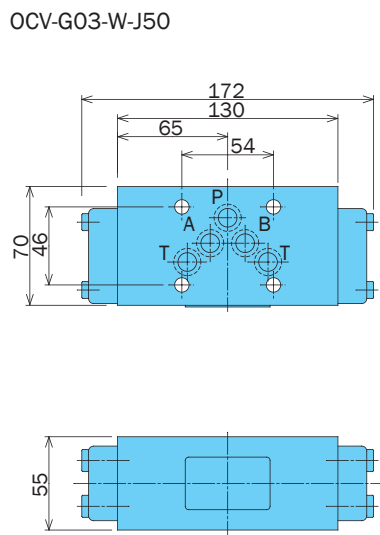
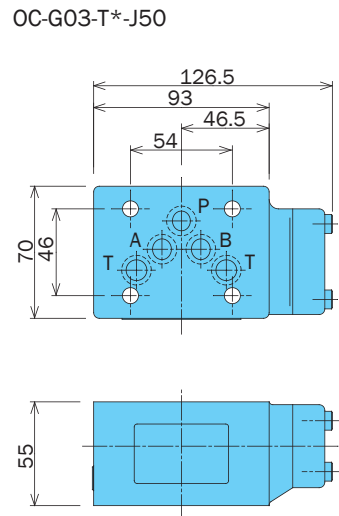
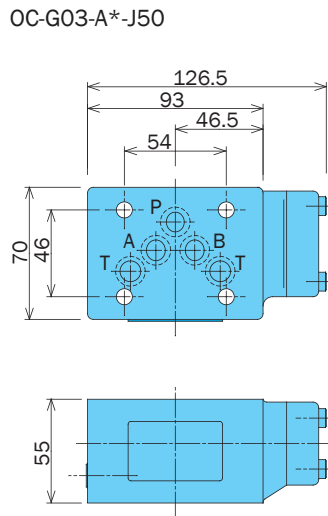
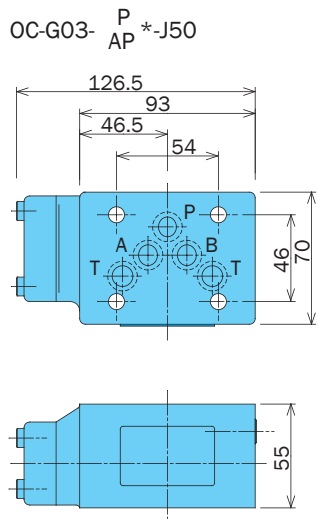
**OCH (OVH) - G 04 - P 1 - 10**



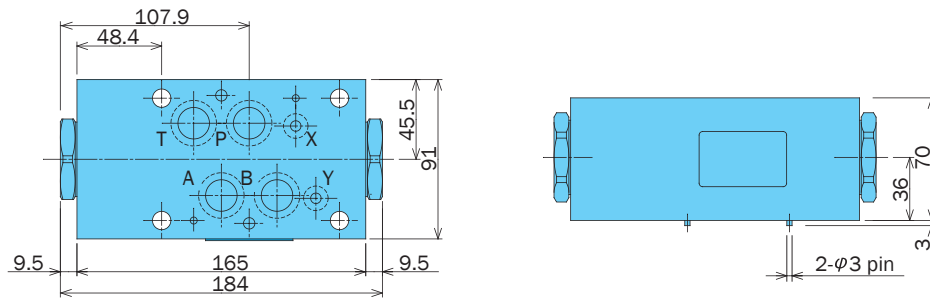
# Installation Dimension Drawing



Note: Dimensions in the parentheses are for the OC-G01-T\*-20.



OVH-G04-W-10

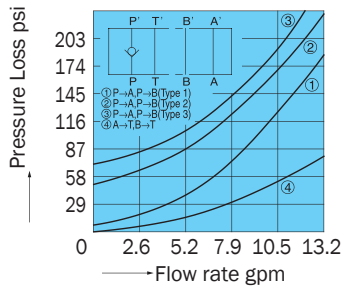


**Performance Curves**

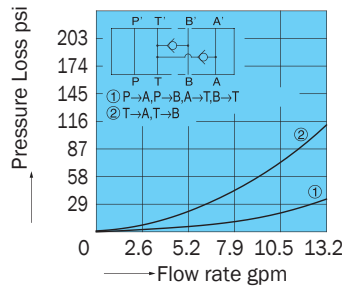
Hydraulic Operating Fluid Viscosity 32 centistokes

Pressure Loss Characteristics

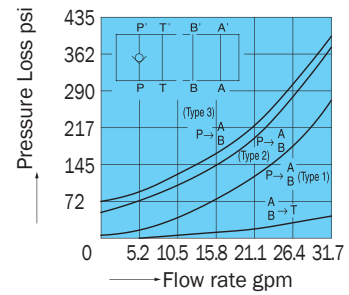
OC-G01-P\*-20



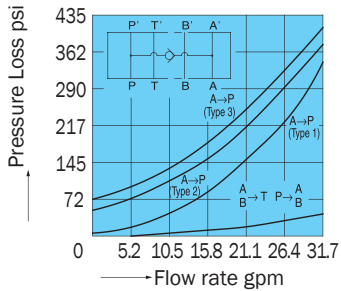
OCV-G01-W-20



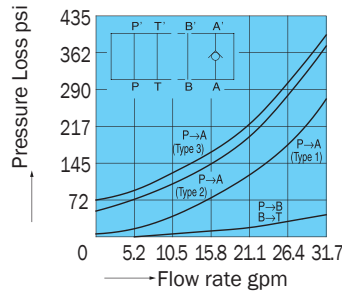
OC-G03-P\*-J50



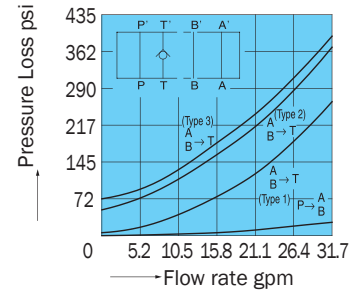
OC-G03-AP\*-J50



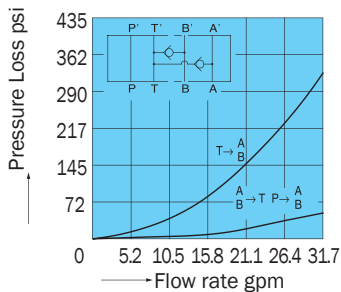
OC-G03-A\*-J50



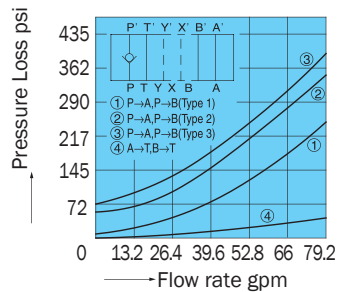
OC-G03-T\*-J50



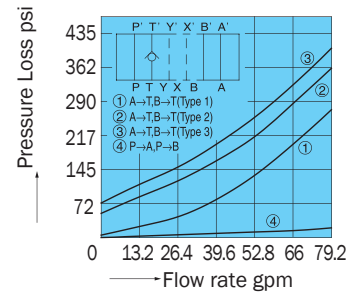
OCV-G03-W-J50



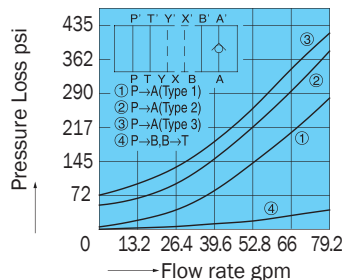
OCH-G04-P\*-10



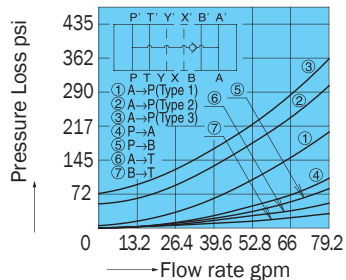
OCH-G04-T\*-10



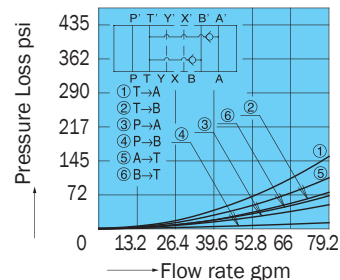
OCH-G04-A\*-10



OCH-G04-AP\*-10

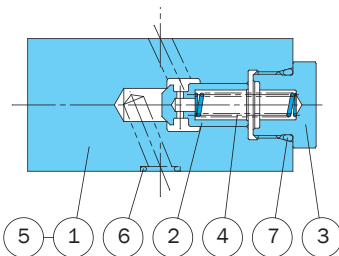


OVH-G04-W-10



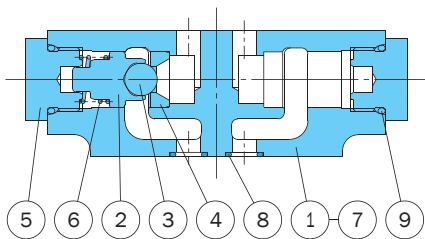
**Cross-sectional Drawing**

P  
OC-G01-T\*-20  
AP



Part No.	Part Name
1	Body
2	Poppet
3	Spring seat
4	Spring
5	Plate
6	O-ring
7	O-ring

OC-G01-A\*-21



Part No.	Part Name
1	Body
2	Poppet
3	Ball
4	Seat
5	Spring seat
6	Spring
7	Plate
8	O-ring
9	O-ring

Seal Part List (Kit Model Number BRBS-01C\*)

Part No.	Part Name	Part Number	Q'ty		
			P	T	AP
6	O-ring	1B-P9	4	4	4
7	O-ring	1B-P18	1	1	1

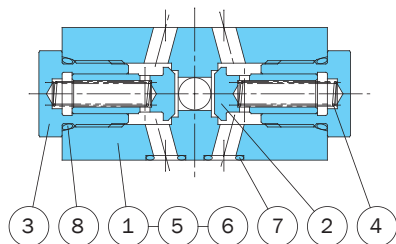
Note:  
1. O-ring 1A/B-\*\* refers to JIS B2401-1A/B.  
2. Specify P, T, or AP for the asterisk (\*) in the kit model number.

Seal Part List (Kit Model Number BDBS-01CA)

Part No.	Part Name	Part Number	Q'ty
			A
8	O-ring	1B-P9	4
9	O-ring	1B-P18	2

Note:  
O-ring 1A/B-\*\* refers to JIS B2401-1A/B.

OCV-G01-W-20



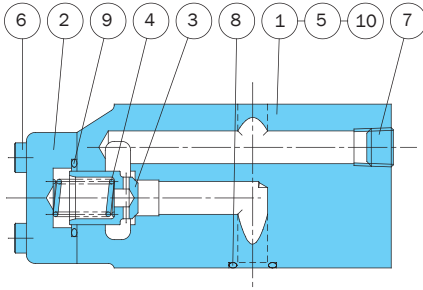
Part No.	Part Name
1	Body
2	Poppet
3	Guide
4	Spring
5	Plate
6	Plug
7	O-ring
8	O-ring

Seal Part List (Kit Model Number BDBS-01CVW)

Part No.	Part Name	Part Number	Q'ty
			W
7	O-ring	1B-P9	4
8	O-ring	1B-P18	2

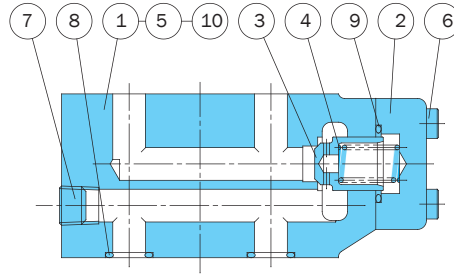
Note:  
1. O-ring 1A/B-\*\* refers to JIS B2401-1A/B.

OC-G03-P\*-J50



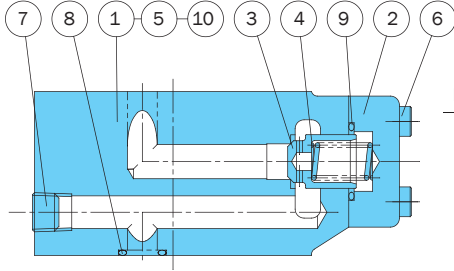
Part No.	Part Name
1	Body
2	Cover
3	Poppet
4	Spring
5	Plate
6	Screw
7	Plug
8	O-ring
9	O-ring
10	Pin

OC-G03-T\*-J50



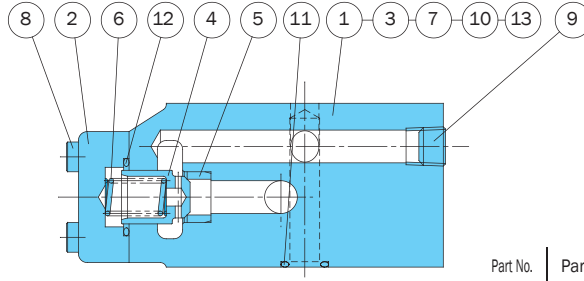
Part No.	Part Name
1	Body
2	Cover
3	Poppet
4	Spring
5	Plate
6	Screw
7	Plug
8	O-ring
9	O-ring
10	Pin

OC-G03-A\*-J50



Part No.	Part Name
1	Body
2	Cover
3	Poppet
4	Spring
5	Plate
6	Screw
7	Plug
8	O-ring
9	O-ring
10	Pin

OC-G03-AP\*-J50



Part No.	Part Name
1	Body
2	Cover
3	Plug
4	Poppet
5	Seat
6	Spring
7	Plate
8	Screw
9	Plug
10	O-ring
11	O-ring
12	O-ring
13	Pin

Seal Part List (Kit Model Number BDES-03C\*)

Part No.	Part Name	Part Number	Q'ty		
			P	T	A
8	O-ring	AS568-014(Hs90)	5	5	5
9	O-ring	1B-P22	1	1	1

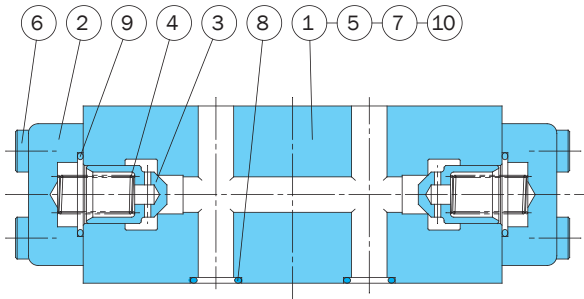
Note:  
 1. O-ring 1A/B-\*\* refers to JIS B2401-1A/B.  
 2. Specify P, T, or A for the asterisk (\*) in the kit model number.

Seal Part List (Kit Model Number BDES-03CAP)

Part No.	Part Name	Part Number	Q'ty
			AP
10	O-ring	1B-P11	1
11	O-ring	AS568-014(Hs90)	5
12	O-ring	1B-P22	1

Note:  
 O-ring 1A/B-\*\* refers to JIS B2401-1A/B.

OCV-G03-W-J50

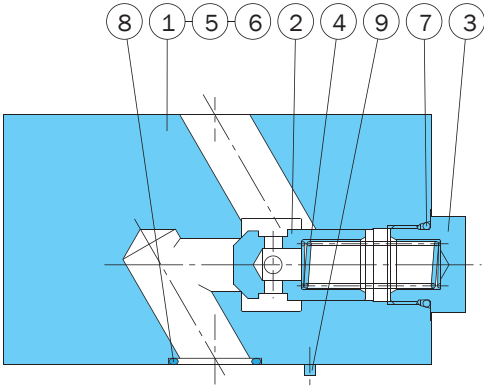


Seal Part List (Kit Model Number BDES-03CVW)

Part No.	Part Name	Part Number	Q'ty
			W
7	O-ring	1B-P10A	2
8	O-ring	AS568-014(Hs90)	5
9	O-ring	1B-P22	2

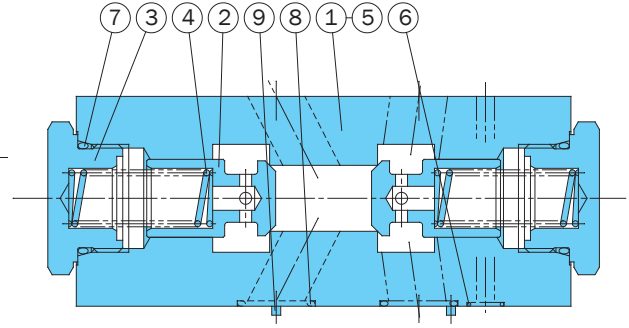
Part No.	Part Name	Part No.	Part Name	Part No.	Part Name
1	Body	5	Plate	9	O-ring
2	Cover	6	Screw	10	Pin
3	Poppet	7	O-ring		
4	Spring	8	O-ring		

OCH-G04-P\*-10



Part No.	Part Name
1	Body
2	Poppet
3	Spring seat
4	Spring Plate
5	O-ring
6	O-ring
7	O-ring
8	O-ring
9	Pin

OVH-G04-W-10



Part No.	Part Name
1	Body
2	Poppet
3	Spring seat
4	Spring Plate
5	O-ring
6	O-ring
7	O-ring
8	O-ring
9	Pin

Seal Part List (Kit Model Number BDKS-04C\*)

Part No.	Part Name	Body	Q'ty			
			P	T	A	AP
6	O-ring	AS568-012(Hs90)	2	2	2	2
7	O-ring	1B-P20	1	1	1	1
8	O-ring	AS568-118(Hs90)	4	4	4	4

Note: 1. O-ring 1A/B-\*\* refers to JIS B2401-1A/B.  
 2. Specify P, T, A, or AP for the asterisk (\*) in the kit model number.

Seal Part List (Kit Model Number BDKS-04CVW)

Part No.	Part Name	Part Number	Q'ty
6	O-ring	AS568-012(Hs90)	2
7	O-ring	1B-P32	2
8	O-ring	AS568-118(Hs90)	4

Note: O-ring 1A/B-\*\* refers to JIS B2401-1A/B.