



RI Series Solenoid Controlled Relief Valve

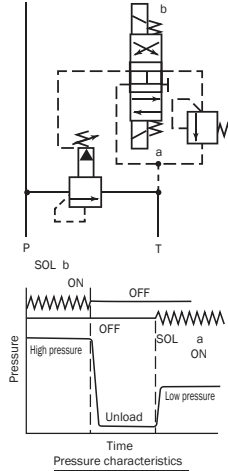
39.6 to 84.5 gpm
5075 psi

Features

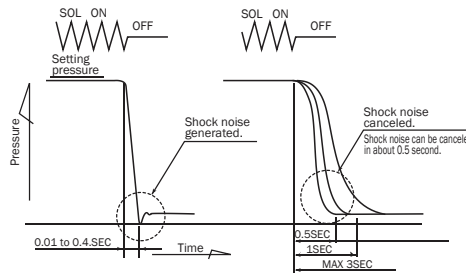
This valve adds a wet type solenoid valve to a balanced type piston type relief valve to form a hydraulic device unload circuit. The shockless type has an internal structure that prevents shock generated during unloading. This valve can also be used in a pressure relief circuit, and has a maximum adjustment time of three seconds. See the pressure relief circuit example.

A two-pressure control circuit can be configured by adding a relief modular valve.
Contact your agent for more information.

(Two-pressure Control Circuit Example)



(Pressure Relief Circuit Example)



Specifications

Model No. Gasket Mounting	Nominal Diameter (Size)	Maximum Flow Rate gpm	Maximum Working Pressure psi	Pressure adjustment range psi	Weight lbs	Gasket Surface Dimensions	JIS Symbol	Used Solenoid Valve Type
RIS-G03-AQ 1 3-**-21 5	3/8	39.6	5075 P, X Ports	Type 1: 116 to 1015	13.2	ISO 6264-AR-06-2-A		SS-G01-A3X-**-31
RIS-G06-AQ 1 3-**-21 5	3/4	84.5		Type 3: 507 to 3625	15.6	ISO 6264-AS-08-2-A		
RIS-G03-AR 1 3-**-21 5	3/8	39.6		Type 5: 507 to 5075	13.2	ISO 6264-AR-06-2-A		SS-G01-AR-**-31
RIS-G06-AR 1 3-**-21 5	3/4	84.5			15.6	ISO 6264-AS-08-2-A		

Shockless Type

RIS-G03-3-F-**-21 1 5	3/8	39.6	5075 P, X Ports	Type 1: 145 to 1015	15.4	ISO 6264-AR-06-2-A		SS-G01-A3X-**-31
RIS-G06-3-F-**-21 1 5	3/4	84.5		Type 3: 507 to 3625	17.8	ISO 6264-AS-08-2-A		

Note: For electrical specifications, see the SS type solenoid valve item on page D-4.

Handling

- To adjust pressure, loosen the lock nut and then rotate the handle clockwise (rightward) to increase pressure or counterclockwise (leftward) to decrease it.
- To adjust the time from onload to unload, loosen the lock nut and rotate the restrictor adjusting bolt clockwise (rightward) to make the time longer, or counterclockwise (leftward) to make it shorter.
- Make sure that tank port back pressure is no greater than 29 psi.
- The ** before the design number in the model number of the solenoid valve used shows voltage. See the voltage symbols in

- the model number explanation.
- A small control flow rate can cause pressure instability. Use a control flow rate that is at least 2.1 gpm. Use a drain type relief valve in the case of a flow rate that is less than the minimum flow rate.
- Use 90 to 110% of rated voltage. Use the following table for specification when a sub plate is required. Maximum operating pressure is 3625 psi.

Model No.	Pipe Diameter	Weight lbs	Applicable Valve Model
MRI-03-E10	3/8	5.7	RIS-G03
MRI-03X-E10	1/2		
MRI-06-E10	3/4	7.7	RIS-G06
MRI-06X-E10	1		

- The following are the bundled mounting bolts.

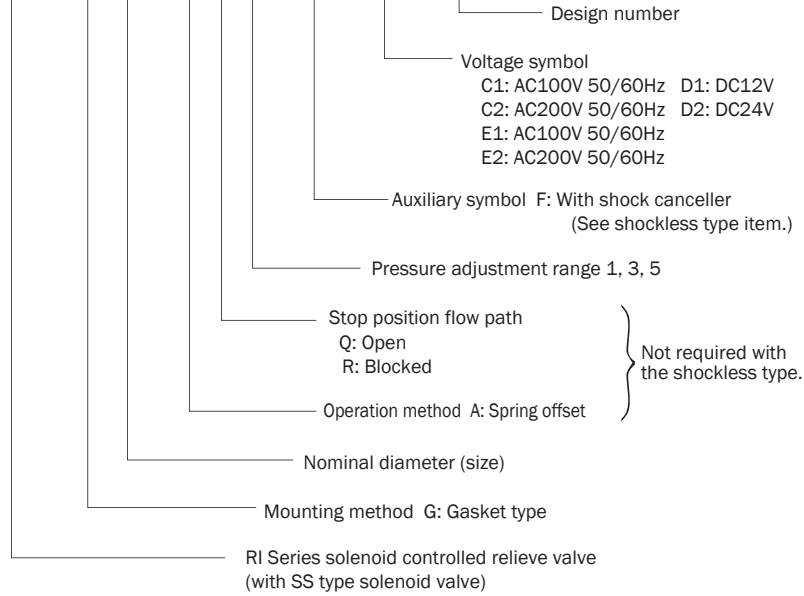
Model No.	Bolt Dimensions	Qty	Tightening Torque ft lbs
RIS-G03-**-**-21	3/8 - 16	4	55 to 70
RIS-G06-**-**-21	5/8 - 11	4	140 to 173

Note: For mounting bolts, use Grade 8 or equivalent.

- The coil surface temperature increases if this pump is kept continuously energized. Install the valve so there is not chance of it being touched directly by hand.

Understanding Model Numbers

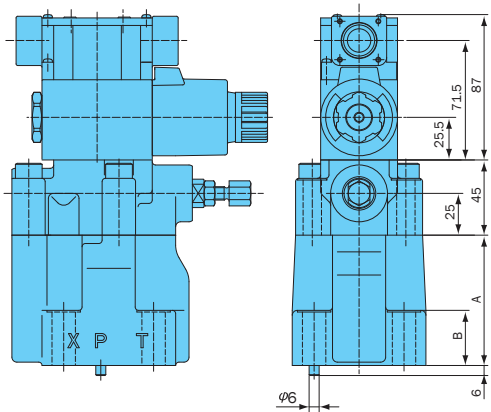
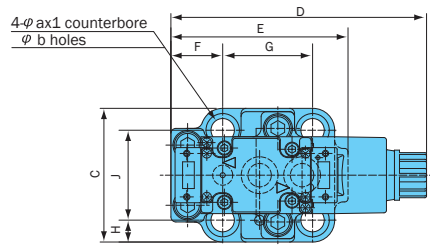
RIS - G 06 - A Q 1 - (F) - C1 - 21



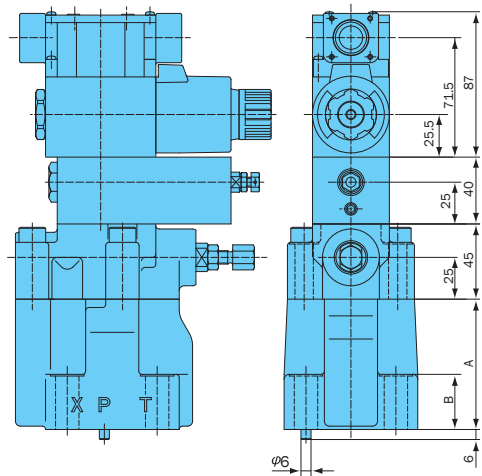
Other auxiliary symbols G, N, and Q (R is omitted) can be used (enter them in alphabetic order if there are 2 or more).

Installation Dimension Drawings

RIS-G**-A**-**-21



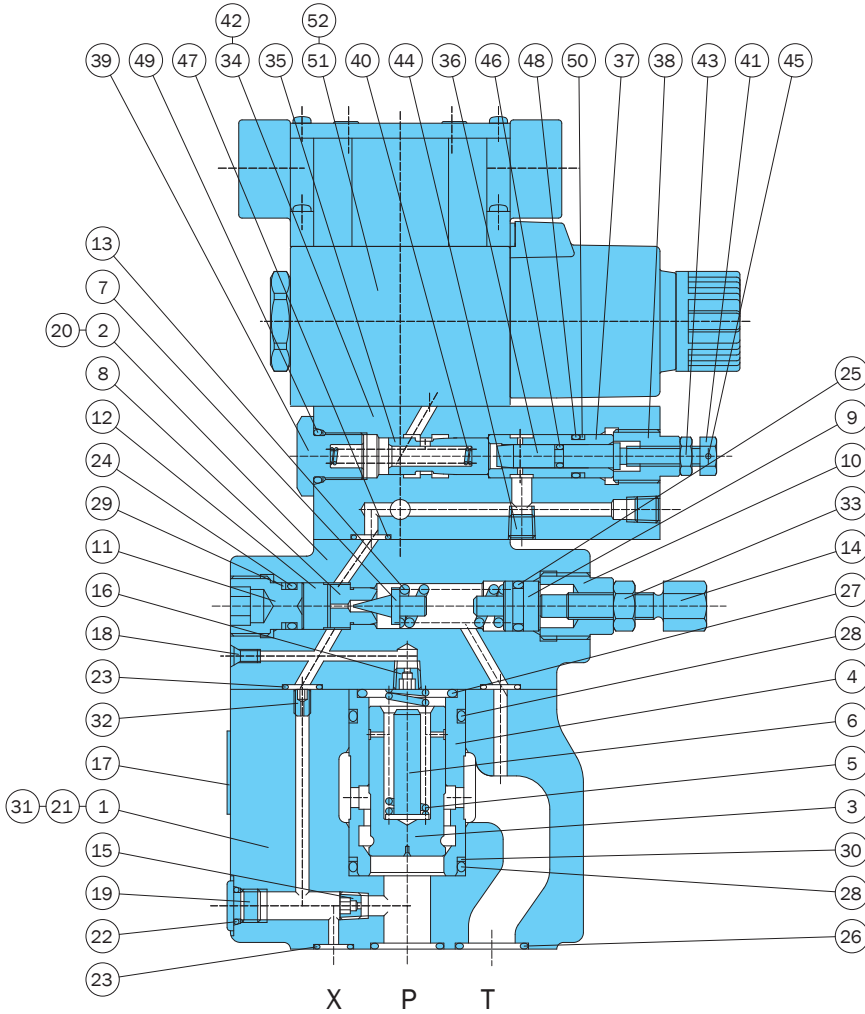
RIS-G**-*-F**-**-21



Model No.	A	B	C	D	E	F	G	H	J	a	b
RIS-G03-**-**-21	78	32	80	153 (160)	106	31	53.8	13.1	53.8	20	14
RIS-G06-**-**-21	83	36	100	162 (169)	119	37	66.7	15	70	26	17.5

Note: 1. For gasket surface dimensions, see RI-G**-** on page I-5.
 2. Figures in (parenthesis) are for the DC solenoid valve.

Cross-sectional Drawing



Part No.	Part Name
1	Body
2	Cover
3	Poppet
4	Sleeve
5	Spring
6	Spacer
7	Poppet
8	Seat
9	Plunger
10	Retainer
11	Plug
12	Collar
13	Spring
14	Handle assy
15	Orifice
16	Orifice
17	Plate

Part No.	Part Name
18	Plug
19	Plug
20	Screw
21	Pin
22	O-ring
23	O-ring
24	O-ring
25	O-ring
26	O-ring
27	O-ring
28	O-ring
29	Backup ring
30	Backup ring
31	Screw
32	Choke
33	Nut
34	Body

Part No.	Part Name
35	Spool
36	Throttle
37	Sleeve
38	Retainer
39	Guide
40	Spring
41	Nut
42	Plate
43	Nut
44	Plug
45	Pin
46	O-ring
47	O-ring
48	O-ring
49	O-ring
50	Backup ring
51	Solenoid Valves
52	Screw

Seal Part List (Kit Model Numbers: Main REBS-***, Restrictor Valve DFS-01H)

Component Parts	Part No.	Part Name	Nominal Diameter/Part Number		Q'ty
			G03	G06	
Main	22	O-ring	1B-P8	1B-P8	1
	23	O-ring	1B-P9	1B-P9	3
	24	O-ring	1B-P10A	1B-P10A	1
	25	O-ring	1A-P11	1A-P11	1
	26	O-ring	1B-P18	1B-P28	2
	27	O-ring	1B-G25	1B-P28	1
	28	O-ring	1B-G30	1B-P32	2
	29	Backup ring	T2-P10A	T2-P10A	1
	30	Backup ring	T2-G30	T2-P32	1
	Restrictor Valve	46	O-ring	1B-P4	
47		O-ring	1B-P9		2
48		O-ring	1B-P10		1
49		O-ring	1B-P12.5		1
50		Backup ring	T2-P10		1

- Note: 1. O-ring 1A/1B-** refers to JIS B 2401-1A/1B-**.
 2. For the *** part of the kit number, specify the valve size (G03, G06).
 3. The restrictor valve kit is required only when a shockless valve is included.
 4. SS (SA)-G01 pilot valve seal is available separately. For details, see pages D-14 (D-26).